



SHANGRI-LA
QIANTAN
SHANGHAI

HOTEL PRESENTATION

January 2022



Contents

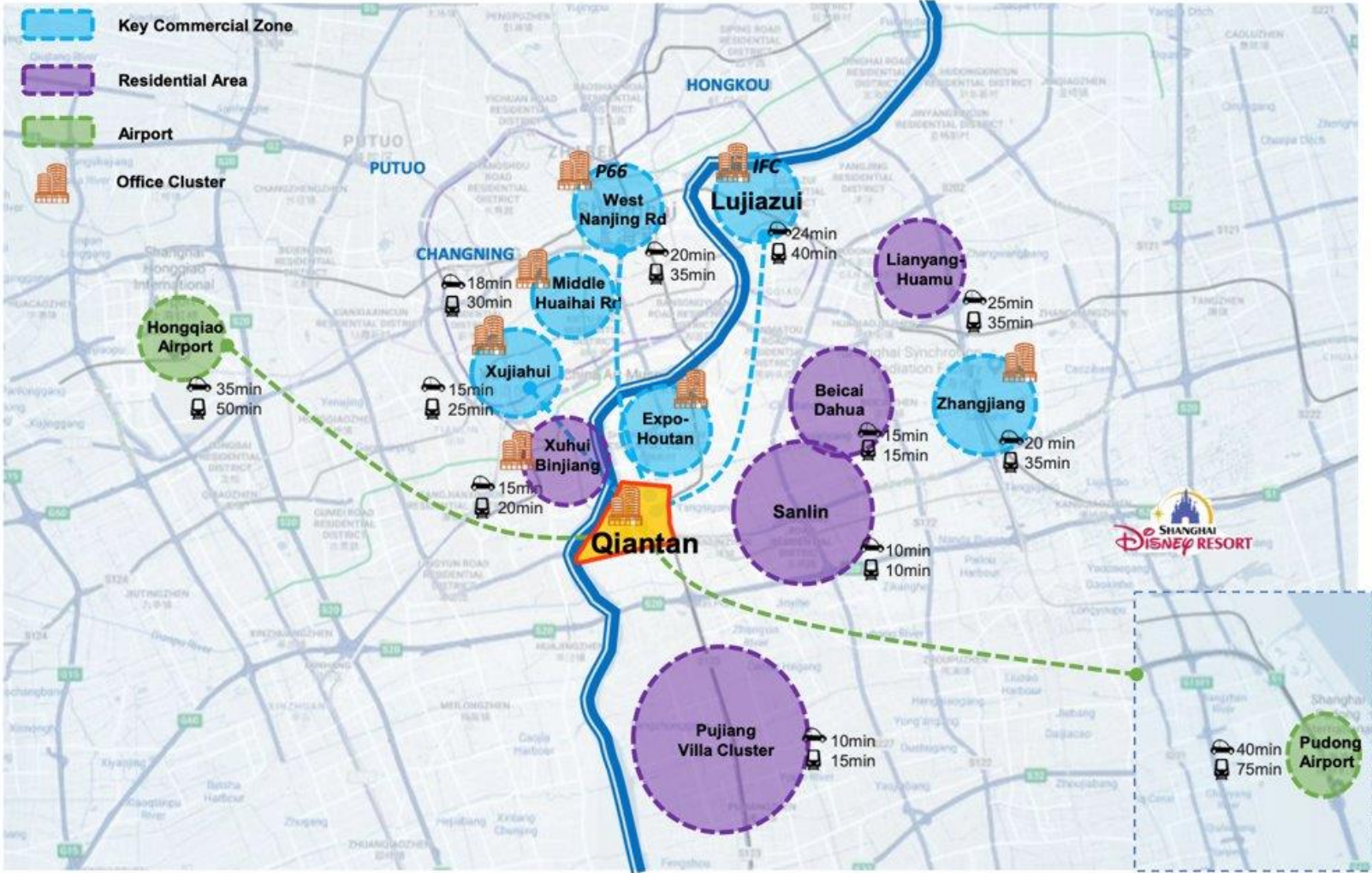
- Location Overview
- About New Bund International Business District
- Hotel Introduction



Location Overview

About Qiantan

- World-Class CBD area
- “Second Lujiazui”
- Eco-International Urban Community



Transportation

- Easy connections to major destination with **3 MTR lines (Line 6/8/11)**
- **Line 19 and Airport Express** are under the construction



Surroundings

- Oriental Sports Center – 0.4km
- Houtan (Expo) – 5km
- Xuhui Riverside – 5km
- Sanlin Pond Ancient Town – 4km
- Sanlin Valley (under development) – 0.9km



Oriental Sports Center



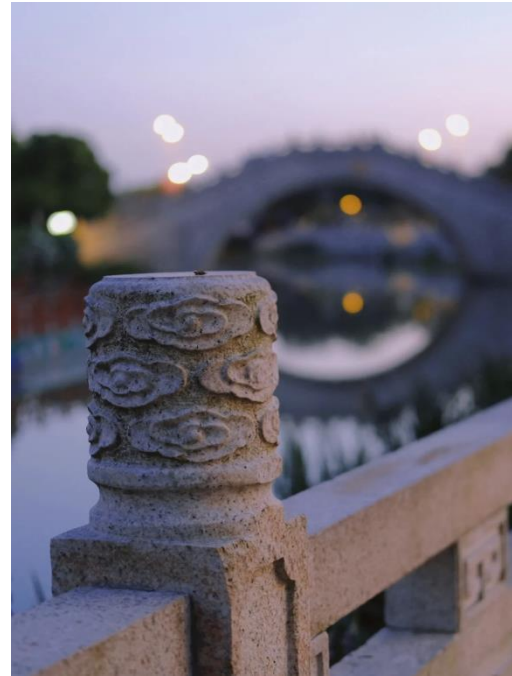
Sports events | Public fitness activities | Exhibitions | Performances

Shanghai Songcheng



Interactive activities | Theme blocks | Cosplay | Theaters & shows

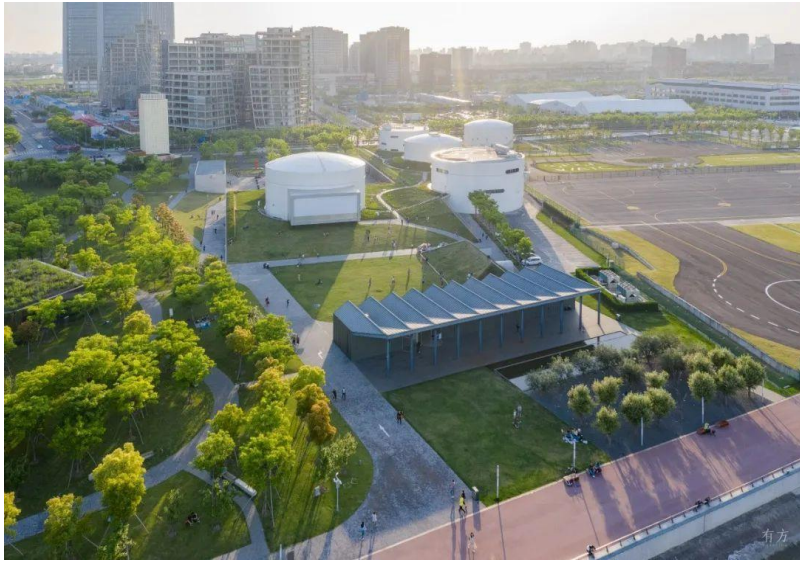
Sanlin Pond Ancient Town



West Bund Art Center



Tank Shanghai



About New Bund International Business District

Mix-used Development

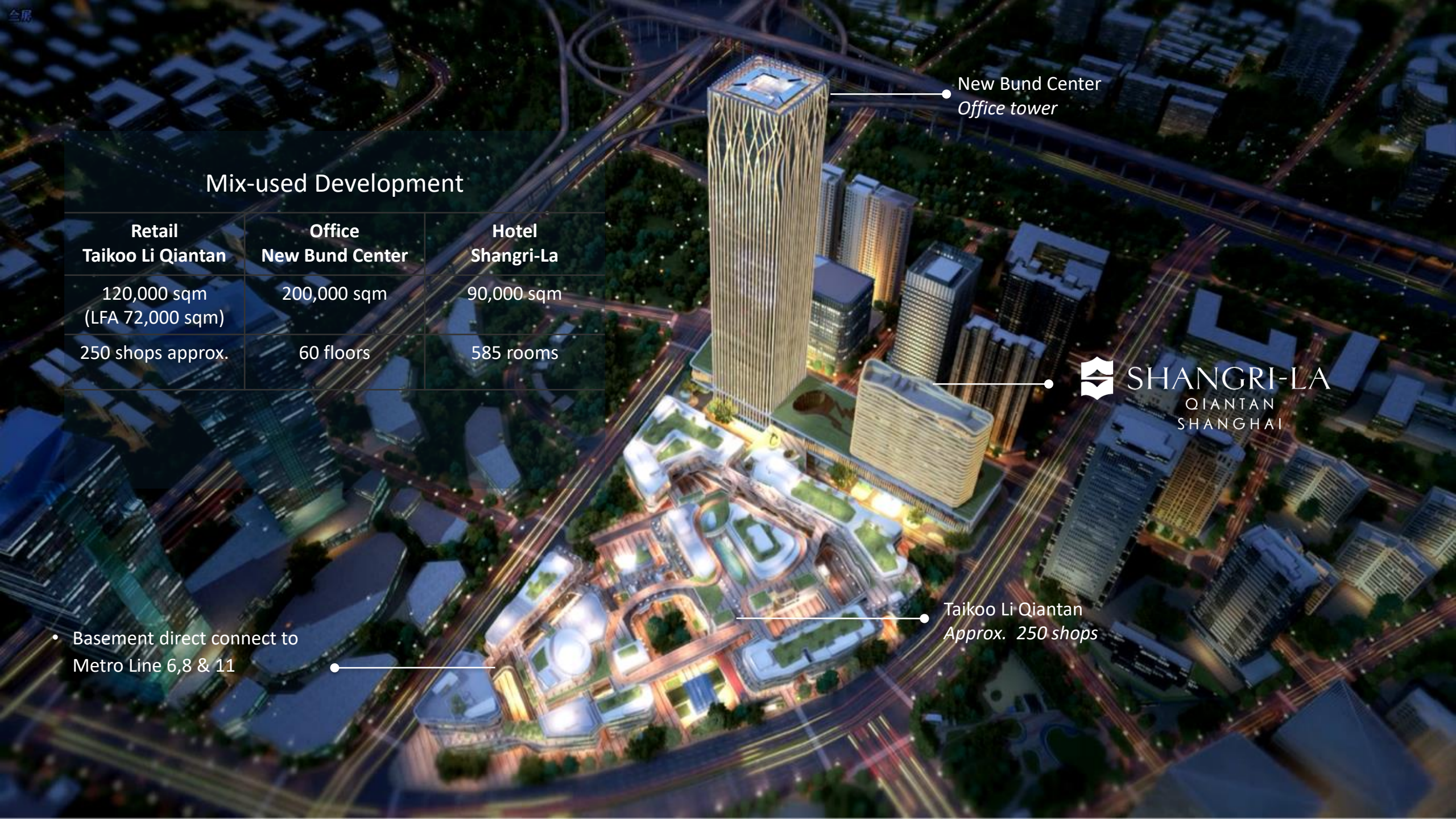
Retail Taikoo Li Qiantan	Office New Bund Center	Hotel Shangri-La
120,000 sqm (LFA 72,000 sqm)	200,000 sqm	90,000 sqm
250 shops approx.	60 floors	585 rooms

New Bund Center
Office tower



Taikoo Li Qiantan
Approx. 250 shops

• Basement direct connect to
Metro Line 6,8 & 11



Taikoo Li



Stonehouse



Woodhouse



Scenic Bridge

250+ Premium Retail Brands



Outdoor Recreation Facilities

- Qiantan Riverside Park
- Qiantan Youcheng Park
- New Bund Sports Club



Hotel Overview

Hotel Overview

8-28F Guestrooms

7F Chinese Restaurant,
Horizon Club Lounge, Outdoor Event Space

3F Ballroom & Function Rooms

2F GYM & Multi-purpose Studio Rooms

1F Lobby, All Day Dining Restaurant, Bar, SPA,
Swimming Pool



No 4F, 14F & 24F

- Total Guest Rooms: 585
- Total Floors: 28
- Height: 99m
- Total GFA (Above Ground): 53,550 m²
- Opening Date: October 27, 2021

Level 1 - Lobby



Reception



Centerpiece



The Library

Level 1 - Lobby Lounge

QT Lounge

A unique public area with multiple food and beverage sections, including the tea bar, GreenT and the coffee bar, Stir & Sip. Guests can enjoy tea and coffee of their choice with delicate homemade pastries. Magnolia, the in-house floral shop, is also a place for seasonal fresh fruits and festive hampers.



No. of seats: 52

Level 1 - Tea Bar

GreenT

A unique tea bar with multiple zones which guests can enjoy classic and contemporary types of Chinese tea, tea infused desserts and tea inspired pastries.



No. of seats : 5

Level 1 - Coffee Corner

Stir & Sip

Island Coffee bar with our uniquely sourced coffee beans brewed a la minute by in house barista and best enjoyed with our home- made pastries.

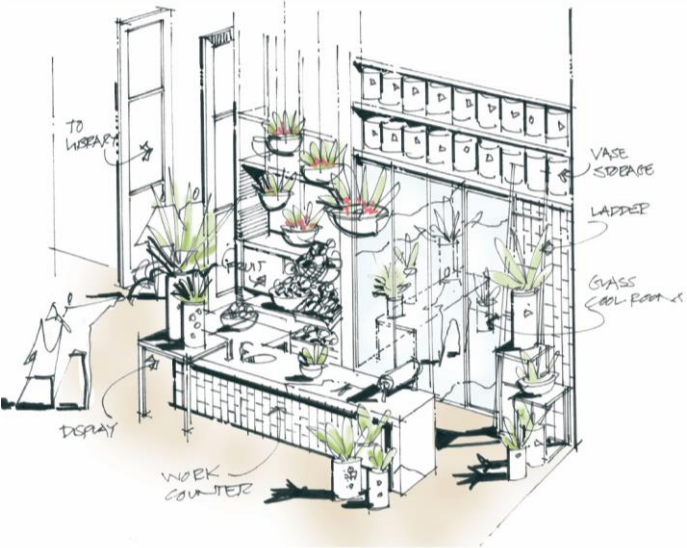


No. of seats: 29

Level 1 - Florist

Magnolia

In house floral shop which also include retail seasonal fresh fruits retail and hampers for hotel guest, surrounding offices and local communities.



Level 1 - Bar

GardenLab

We invite our guests to this 'house garden' to enjoy our signature herb inspired cocktails, large selection of fine wines and list of international beverages.



No. of seats: 58

Level 1 - All Day Dining

QT Kitchen

Hotel's all day dining restaurant brings together multiple open kitchens that serve a selection of international cuisines. The dedicated area 'Boil' allows guests to enjoy sea food hot pot.

No. of seats: 213

- Main dining area: 131
- Hot pot: 58
- Private dining room: 24



Level 1 - Recreation Facilities

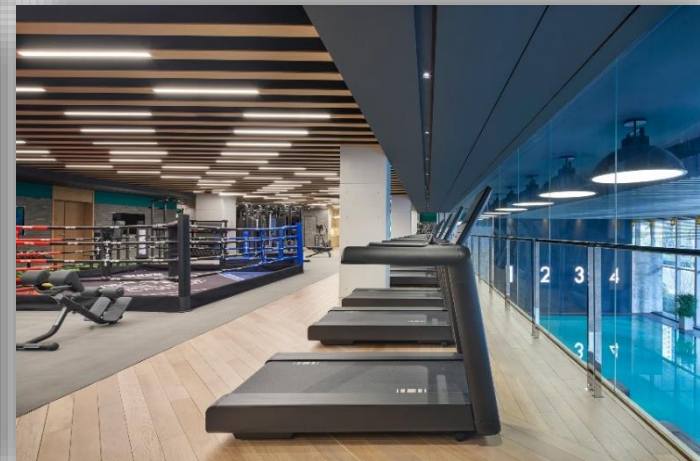
2,300sqm *Wellness Club*

GYM

- Family changing room & with over 200 lockers
- 830 sqm gym area equipped with aerobic facilities and professional strength training equipment
- Indoor heated swimming pool
- Steams, sauna & whirlpool
- Multi-purpose studio rooms

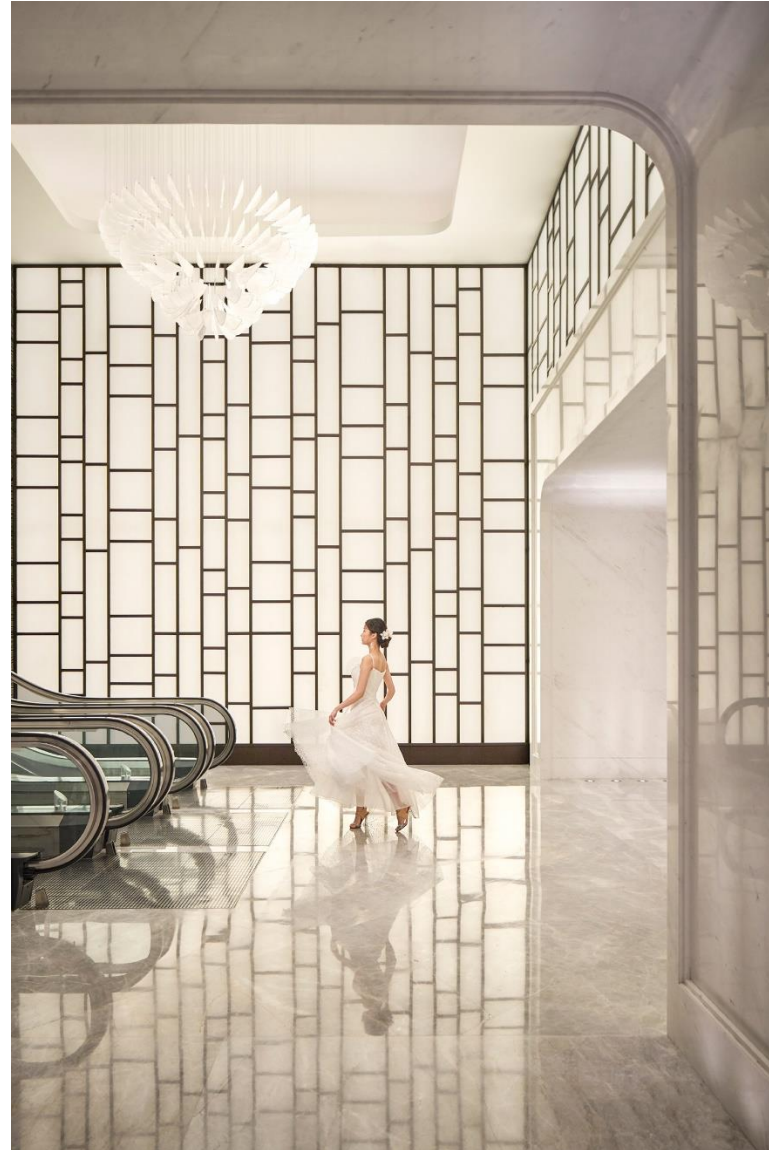
SPA at Shangri-La Qiantan, Shanghai

- 7 treatment rooms
- Manicure & Pedicure

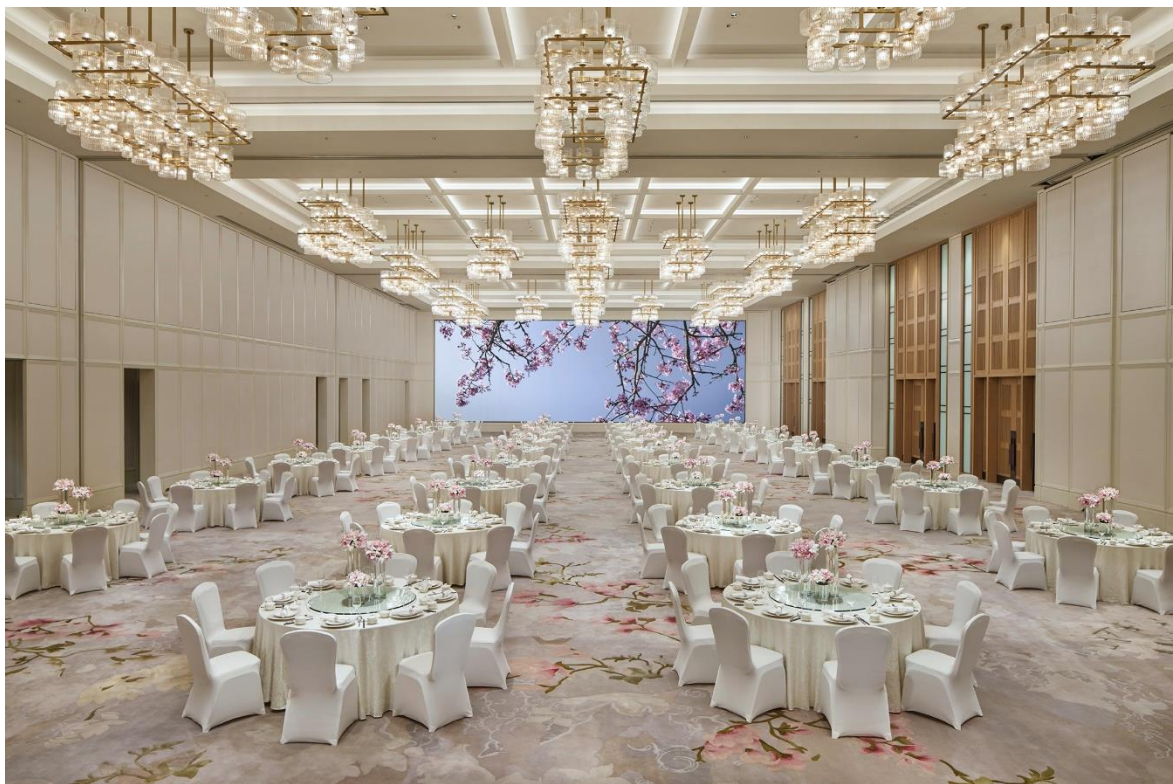


Level 1 – Entrance of Ballrooms and Function Rooms

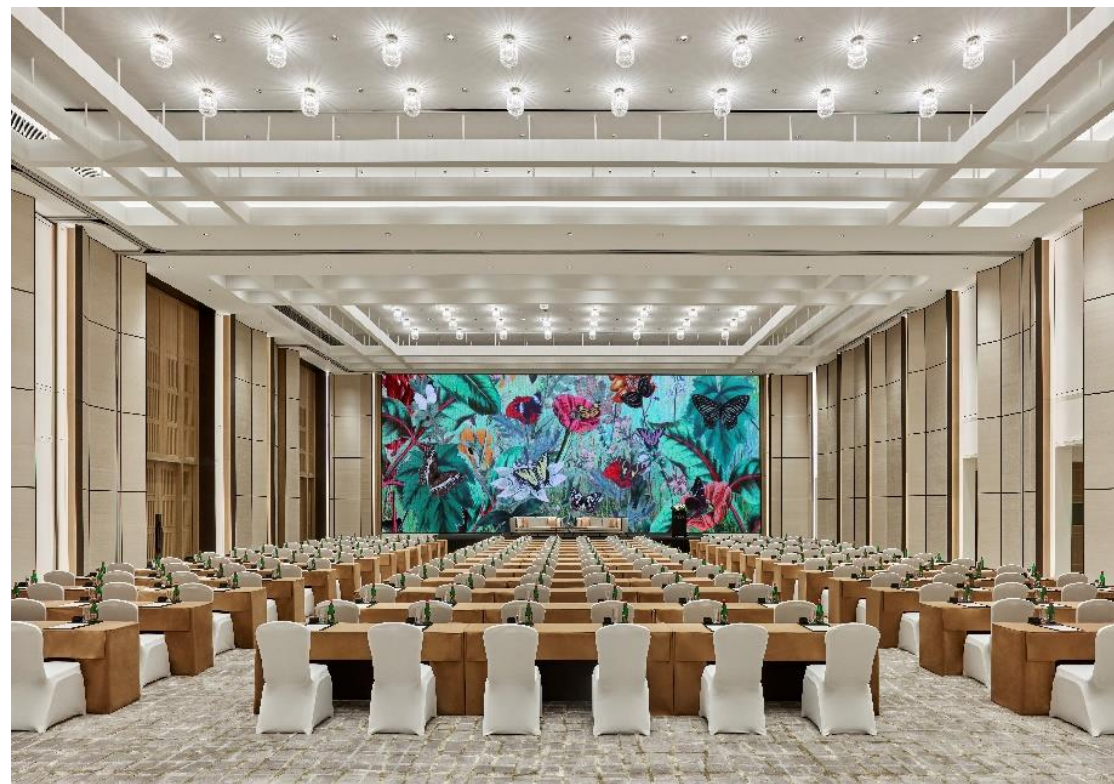
Entire wall color can be customized according to event theme



Level 3 - Ballrooms



1,600 sqm Oriental Grand Ballroom



1,000 sqm Qiantan Ballroom

Level 3 - Foyer



Level 3 - Function Rooms



Level 7 - Outdoor Space



3,000 sqm outdoor event space - Qyard

Capacity of Ballrooms and Function Rooms

Venue		Area (sqm)	Capacity					Dimensions Length * Width (m)	Ceiling Height (m)	
English Name	Chinese Name		Reception	Theatre	Banquet	Classroom	Board			Sofa
Level 3										
Oriental Grand Ballroom	东方大宴会厅	1,600	1,500	1,500	900	800	400		64 x 25	8
Oriental Pre-function A	东方序厅A	225	200	200	110				9 x 25	8
Oriental Grand Ballroom 1	东方大宴会厅 1	475	450	450	220	200	100		19 x 25	8
Oriental Grand Ballroom 2	东方大宴会厅 2	475	450	450	220	200	100		19 x 25	8
Oriental Grand Ballroom 3	东方大宴会厅 3	425	400	400	200	180	90		17 x 25	8
Oriental Pre-function B	东方序厅B	350	300						70 x 5	8
Qiantan Ballroom	前滩宴会厅	1,000	800	800	450	400	200		40 x 25	8
Qiantan Pre-function A	前滩序厅A	200	120	120	80				8 x 25	8
Qiantan Ballroom 1	前滩宴会厅 1	400	300	300	200	150	100		16 x 25	8
Qiantan Ballroom 2	前滩宴会厅 2	400	300	300	200	150	100		16 x 25	8
Qiantan Pre-function B	前滩序厅B	200	180					%	40 x 5	8
Foyer	门厅	620	580						11.2 x 54.8	8
VIP Room 1	尊颐厅	69						16	8.2 x 8.4	3
VIP Room 2	百合厅	66			20			16	8.8 x 7.5	3
Willow + Tung + Banyan + VIP 2	柳+桐+榕+百合	328	250	250	170	150			36.3 x (7.5~11)	3
Willow	柳	150	120	120	70	60	54	36	13.7 x 11	3
Tung	桐	66	56	56	40	30	24	16	8.8 x 7.5	3
Banyan	榕	66	56	56	40	30	24	16	8.8 x 7.5	3
Prune + Laurel + Cypress	梅+桂+柏	198	160	160	120	90			26.4 x 7.5	3
Prune	梅	66	56	56	40	30	24	16	8.8 x 7.5	3
Laurel	桂	66	56	56	40	30	24	16	8.8 x 7.5	3
Cypress	柏	66	56	56	40	30	24	16	8.8 x 7.5	3
Level 5										
Pine	松	90						30	12 x 7.4	3
Level 7										
Qyard A	浅氧花园 A	380	200	200					32.5 x 16	
Qyard B	浅氧花园 B	880	400	400					41.8 x 23.1	

Level 7 - Chinese Restaurant

Hotel's signature Chinese Restaurant offering new Huaiyang Cuisine. It boasts 1 main dining hall and 6 private dining rooms. The restaurant is with consultation of Chef Hou Xin Qing, Executive Chinese Chef at Shangri-La Nanjing, where the award-winning Jiangnan Wok brand was first debut and was honored with a Black Pearl Listing.

6 private dining room: Plum Blossom, Orchid, Bamboo, Hibiscus, Begonia, Lotus

No. of seats: 130

- Main dining hall: 66
- Private dining room: 64



Shangri-La Jiangnan Wok

Authentic Huaiyang Cuisines with 85 Chef's Recommended Dishes



Level 7 - Horizon Club Lounge



No. of seats: 84

- Main dining area: 76
- Meeting room: 8

Level 8-28 - Guestrooms

Total Guestrooms: 585

- Regular Room: 458 (78%)
- Club Room: 73 (13%)
- Suites: 54 (9%)

- Twin: 196
- King: 389 (incl.56 Convertible King)



Guestroom Overview

Room class	Category	Size (sqm)	Qty	Orientation
Standard Rooms	Deluxe Room	35	55	City View
	Deluxe Bund View Room	35	268	Bund and Taikoo Li View
	Executive Room	45	135	City View
Horizon Club	Horizon Club Room	45	36	City View
	Horizon Club Premier	51	37	City View
Suites	Executive Bund View Suite	68	37	Bund and Taikoo Li View
	Deluxe Suite	71	13	
	Specialty Suite	106.5	3	
	New Bund Suite	227	1	



Thank you

